

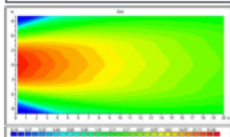
CR80 CP WORKING LAMP WITH 4 LED

Features

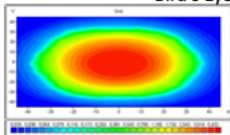
- Homologated according to ECE R10
- Compact, esthetic and elegant design
- Pan-tilt rotation mechanism
- Power LED Technology
- Thermal conductive polymer body
- **Corrosion protected**
- High efficiency reflector design
- Various connector options
- Integrated connector
- Clear or striped lens options
- Thermal shock resistant
- Impact shock resistant
- 6000°K Color Temperature
- Minimum 2000 Lumen lighting values for 4 LED type
- Wide range voltage 9 – 60V DC
- Energy consumption 14W ± %10
- Connector type: Delphi 12124817 Deutsch DT06-2s
- SERKOvent color change with lamp type
- Weight: ~300g (~0,66lb)
- Dimensions: Ø80x65mm (Ø3,14x2,55inch) Deutsch Connector
Ø80x75mm (Ø3,14x2,95inch) Delphi Connector
- 100% Tested before delivery



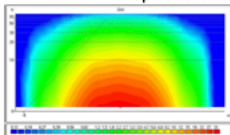
PARTS	PARTS NAME	PARTS NO
	CR80 CP 4 LED WORKING LAMP DELPHI CONNECTOR CLEAR LENS	0001.3736.001
	CR80 CP 4 LED WORKING LAMP DELPHI CONNECTOR STRIPED LENS	0001.3736.011
	CR80 CP 4 LED WORKING LAMP DEUTSCH CONNECTOR CLEAR LENS	0001.3736.000
	CR80 CP 4 LED WORKING LAMP DEUTSCH CONNECTOR STRIPED LENS	0001.3736.010



Bird's Eye



Spheric Grid



Driver's View

